



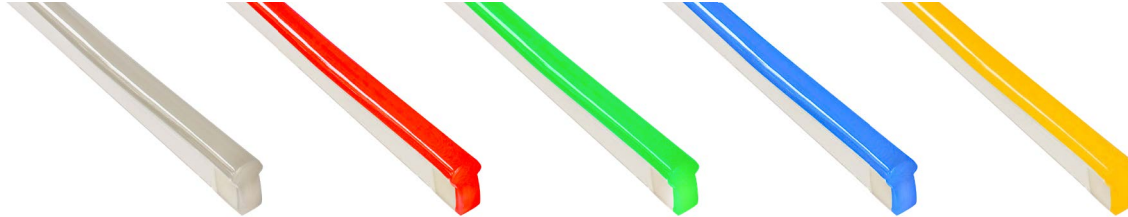
SIGNWAVE™ 2 (INDOOR/OUTDOOR)

SW2-SERIES | LINE VOLTAGE
FLEXIBLE LIGHTING SYSTEM

Fixture Type: _____

Project: _____

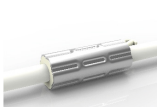
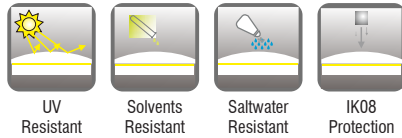
Location: _____



Color/Kelvin	WHITE (3500K)	RED	GREEN	BLUE	AMBER
Wavelength	N/A	620-630nm	520-530nm	465-475nm	585-595nm
Wattage	2W/ft	2W/ft	2W/ft	2W/ft	2W/ft
Power Feed	Every 50ft	Every 50ft	Every 50ft	Every 50ft	Every 50ft
Cut Intervals	19.69" (500mm)	19.69" (500mm)	19.69" (500mm)	19.69" (500mm)	19.69" (500mm)

PRODUCT FEATURES

- 50ft per power feed
- Dimmable
- Line Voltage
- 50,000 hour life
- Domed profile for large beam angle
- UL-listed for indoor and outdoor use
- IP65
- Factory-installed power feed



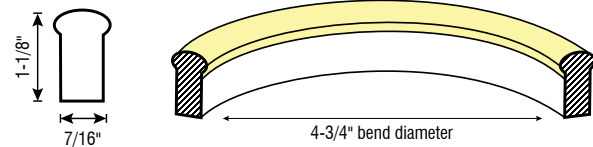
DryWire ferrule located 115mm from the cable connector. Protects against damage from water ingress inside cable wire.

Included in every run.

SPECIFICATIONS

Series	SW2 - Signwave™ 2
Input Voltage	120V AC
Lumens	80 Lm/ft (White)
Max Run Length	Unlimited, power every 50ft
Beam Angle	320°
Dimensions	7/16" (11.5mm) x 1-1/8" (29mm)
CRI	80+
Dimming Options	PWM, Triac, 0-10V, DMX, Hi-lume
Temp Range	-4°F (-20°C) to 95°F (35°C)

DOMED PROFILE DIMENSIONS



Conforms to ANSI/UL Standard 2108
Certified to CAN/CSA Standard C22.2 No. 250.0

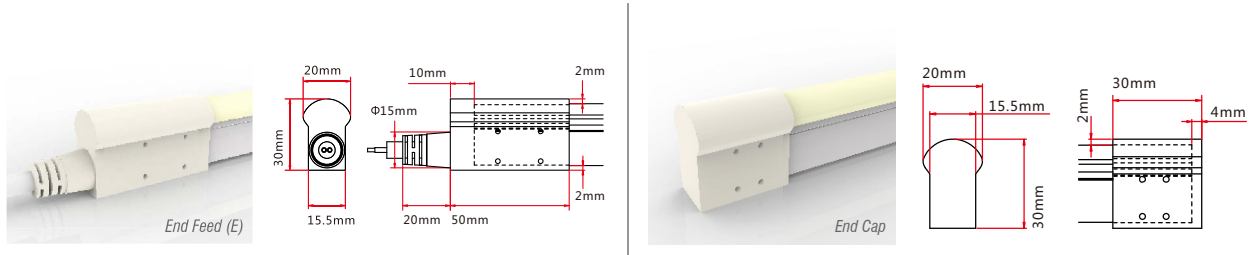




SIGNWAVE™ 2 (INDOOR/OUTDOOR)

SW2-SERIES | LINE VOLTAGE | FLEXIBLE LIGHTING SYSTEM

IP65 OPTIONS



ORDERING INFORMATION

Example: **SW2-60-AM-E-S-IP65**

Series	Length (Unlimited)	Color	Feed Point	Feed Length	Rating
SW2			E		IP65
SW2	Inches	WH - White (3500K) RD - Red GRN - Green BL - Blue AM - Amber	E - End Feed	S - Standard (72 inch) Inches - Custom length (inches).	IP65



SIGNWAVE™ E-ACCESSORIES

FOR SIGNWAVE™ 1, 2, 5, 7 SERIES LIGHTING SYSTEM

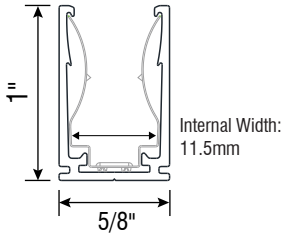
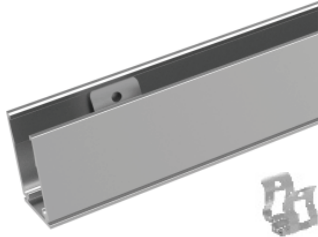
Fixture Type: _____

Project: _____

Location: _____

SW-E-CH-AL-2M

(2-meter aluminum mounting channel)

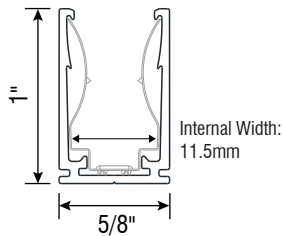


SPECIFICATIONS

Model	SW-E-CH-AL-2M
Material	Aluminum
Length	2m (78-3/4")
Width	16.2mm (5/8")
Height	25.6mm (1")
Internal Width	11.5mm (7/16")

SW-E-CLP-AL

(1.5-inch aluminum mounting clip)

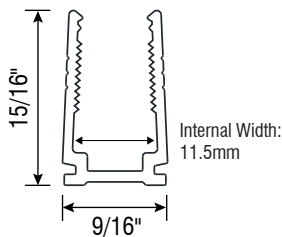
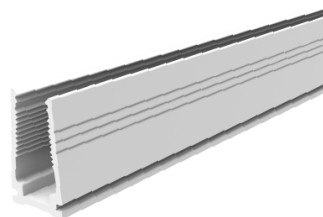


SPECIFICATIONS

Model	SW-E-CLP-AL
Material	Aluminum
Length	38.1mm (1-1/2")
Width	16.2mm (5/8")
Height	25.6mm (1")
Internal Width	11.5mm (7/16")

SW-E-CH-PL-2M

(2-meter plastic mounting clip)



SPECIFICATIONS

Model	SW-E-CH-PL-2M
Material	Plastic
Length	2m (78-3/4")
Width	14mm (9/16")
Height	24mm (15/16")
Internal Width	11.5mm (7/16")