

FIXTURE TYPE \_\_\_\_\_

PROJECT NAME \_\_\_\_\_

LOCATION \_\_\_\_\_



# CH-409

EXTRUDED ALUMINUM MOUNTING CHANNEL



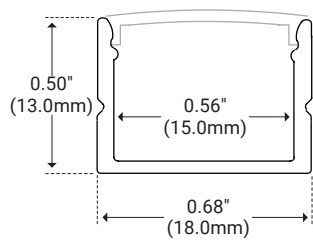
## I Features

- Available in 2 Meter Sections
- Extruded Aluminum Construction
- Anodized Matte Finish
- Consult Factory for Custom Lengths & Finishes
- With Symmetric Louver: UGR<13

## I Specifications

Series	CH-409
Length	78.74" (2M)
Width	0.68" (18.0mm)
Height	0.50" (13.0mm)
Internal Width	0.56" (15.0mm)

## I Channel Dimensions



## I Product Code Builder

Series	Length	Lens	Mounting	End Cap
<b>CH-409</b>	<b>2</b>		<b>CP</b>	<b>EC</b>
CH-409 – CH-409	2 – 2 Meters	<b>WH</b> – White <b>SWH</b> – White Continuous <b>BK</b> – Black <b>FR</b> – Frosted <b>CL</b> – Clear	<b>CP</b> – Mounting Clip (Included)	<b>EC</b> – End Caps (included)

Example: CH-409-2-WH-CP-EC

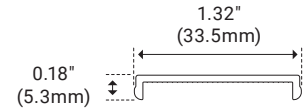


## I Lenses

### White Lens



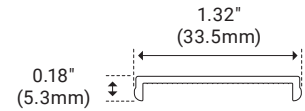
Ordering Code	WH
Transmission %	53%
Width	1.32" (33.5mm)
Height	0.18" (5.3mm)



### White Continuous Lens



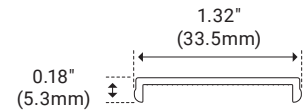
Ordering Code	SWH
Transmission %	53%
Width	1.32" (33.5mm)
Height	0.18" (5.3mm)



### Black Lens



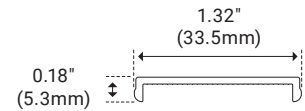
Ordering Code	BK
Transmission %	12%
Width	1.32" (33.5mm)
Height	0.18" (5.3mm)



### Frosted Lens



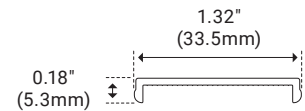
Ordering Code	FR
Transmission %	85%
Width	1.32" (33.5mm)
Height	0.18" (5.3mm)



### Clear Lens



Ordering Code	CL
Transmission %	96%
Width	1.32" (33.5mm)
Height	0.18" (5.3mm)





## I Mounting

### Surface Mounting Clips



Ordering Code	CP
Unit Number	CH-CLP-409
Length	0.88" (22.18mm)
Width	0.59" (14.87mm)
Height	0.33" (8.57mm)
Height w/ Product	0.64" (16.25mm)

## I End Caps

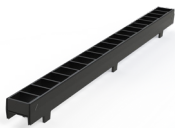
### End Cap Set



Ordering Code	EC
Unit Number	CH-EC-409
Length	0.28" (7.17mm)
Width	0.72" (18.18mm)
Height	0.55" (14mm)
Hole Diameter	0.25" (6.41mm)

## I Louver

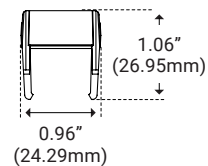
### Symmetric Louver



\*Sold Separately

Unit Number	CH-409-LV-BK-1FT
UGR	UGR<13
Length	12.04" (305.84mm)
Width	0.96" (24.29mm)
Height	1.06" (26.95mm)
Installed Height with Clip	1.1" (27.68mm)
Material	Black PC-ABS

Side View



Full Assembly

