

FIXTURE TYPE _____

PROJECT NAME _____

LOCATION _____



AC Zolo™ 7 RGBW Combined

LINE VOLTAGE WASHER/GRAZER



Description

The AC Zolo 7 is the first line voltage option in our flagship grazing series. Available with a variety of optics, accessories, and color temperature options without the need for remote drivers.

Features

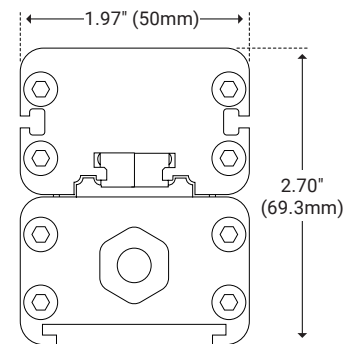
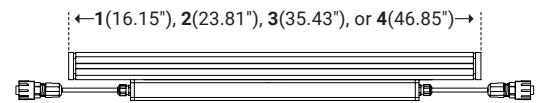
- High Purity Tempered Glass
- Extruded Aluminum Alloy Housing
- Available in Titanium Gray, Black, or White Finish*
- Daisy Chain Multiple Fixtures
- IP66 Outdoor Rated
- Louver Options Available
- RDM Enabled for Easy Addressing

Specifications

Input Voltage	120–277VAC
Color Option	RGB + 3000K
Watts per Foot	15W/ft
Lumen per Watt	40 lm/W
Lumen per Foot	600 lm/ft
Beam Spread	20°, 25°, 35°, 50°
Max Run Length	50ft at 120V AC 80ft at 277V AC
CRI	80*
Dimming Options	DMX
Operating Temp. Range	14°F (-10°C) to 122°F (50°C)
Storage Temp.	-22°F (-30°C) to 140°F (60°C)

Dimensions

Length	Variable (see below)
Width	1.97" (50mm)
Height	2.70" (69.3mm)



* Customizable—Consult Factory



I Ordering Code Builder

Item	Length	Power	Fixture Type	Dimming
Z7AC Z7AC—AC Zolo 7	1 —16.15" (410mm) 2 —23.81" (605mm) 3 —35.43" (900mm) 4 —46.85" (1190mm)	15 —15W/ft	C —Combined	X —DMX/RDM
Color*	Beam Angle	Mounting	Finish*	Option
30 30—3000K	20 —20° 25 —25° 35 —35° 50 —50°	S2 —2" Stand Off S3 —3" Stand Off GS —Ground Stake L3 —L Bracket	TG —Titanium Gray BK —Black WH —White	NA —None LV —Louver ALV —Asymmetric Louver

Example: Z7AC-1-15-C-X-30-20-S2-TG-LV

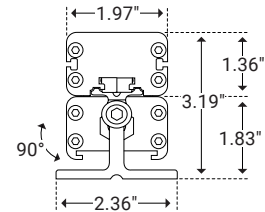
* Customizable—Consult Factory

I Mounting

2" Stand Off



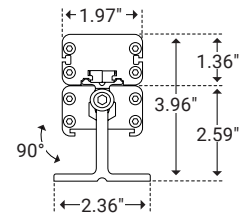
Unit Number	Z-07-S2
Ordering Code	S2
Foot Length	1.18" (30mm)
Foot Width	2.36" (60mm)
Stand Off Height	1.83" (46.4mm)



3" Stand Off



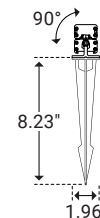
Unit Number	Z-07-S3
Ordering Code	S3
Foot Length	1.18" (30mm)
Foot Width	2.36" (60mm)
Stand Off Height	2.59" (66mm)



Ground Stake



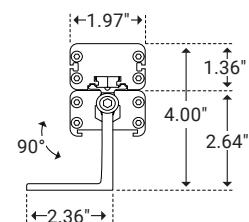
Unit Number	Z-07-GS
Ordering Code	GS
Stake Length	8.23" (209mm)
Stake Width	1.96" (50mm)



L Bracket



Unit Number	Z-07-L3
Ordering Code	L3
Foot Length	1.18" (30mm)
Foot Width	2.36" (59.9mm)
Stand Off Height	2.64" (66.9mm)



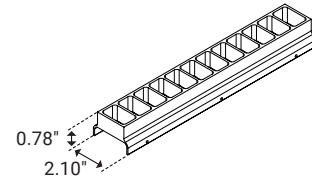


I Glare Options

Louver



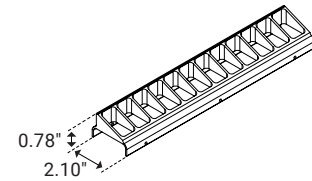
Unit Number	Z-07-LV
Ordering Code	LV
Louver Width	2.10" (53.3mm)
Louver Height	0.78" (20mm)
Overall Height	1.29" (33mm)



Asymmetric Louver



Unit Number	Z-07-ALV
Ordering Code	ALV
Louver Width	2.10" (53.3mm)
Louver Height	0.78" (20mm)
Overall Height	1.29" (33mm)

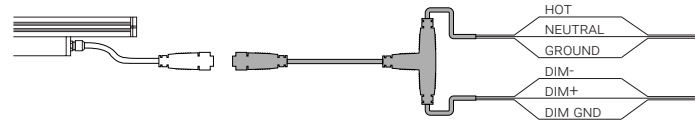


I Power & Connectors

Power Lead



Unit Number	Length
Z-7AC-FML-6	6ft
Z-7AC-FML-20	20ft
Z-7AC-FML-50	50ft



Connector



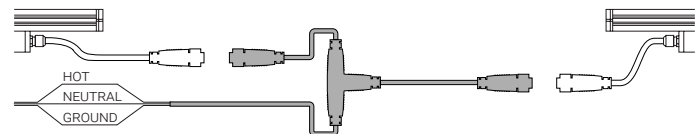
Unit Number	Length
Z-7AC-FMC-1	1ft
Z-7AC-FMC-2	2ft
Z-7AC-FMC-6	6ft



T-Connector



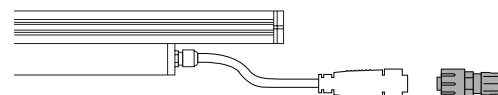
Unit Number
Z-7AC-TCONNECTOR



End Cap



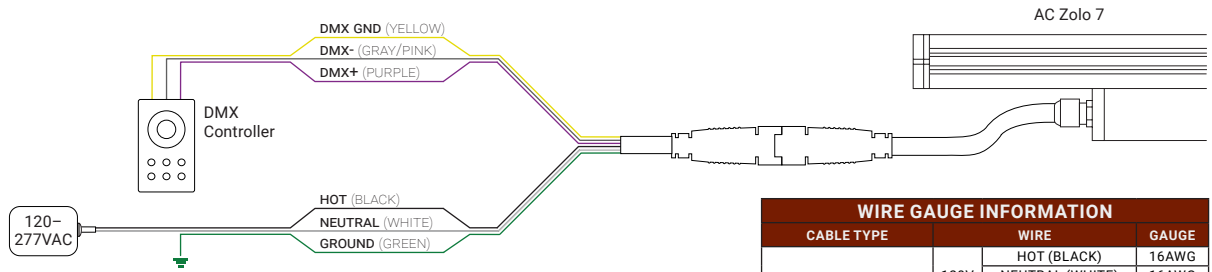
Unit Number
Z-7AC-END-DMX





Wiring Options

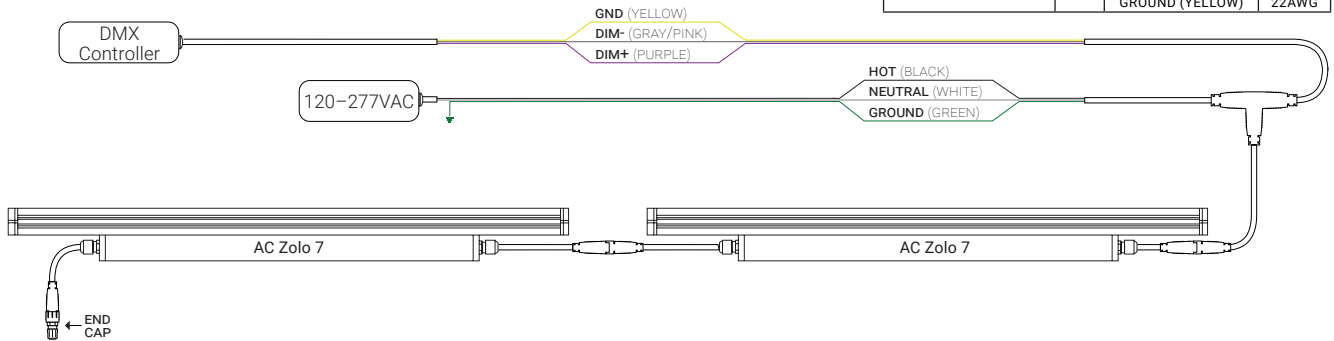
DMX



WIRE GAUGE INFORMATION			
CABLE TYPE	WIRE	GAUGE	
POWER LEAD AND T-CONNECTOR	120V	HOT (BLACK)	16AWG
	120V	NEUTRAL (WHITE)	16AWG
	120V	GROUND (GREEN)	16AWG
	DMX	DMX+ (PURPLE)	20AWG
	DMX	DMX- (PINK)	20AWG
	DMX	GROUND (YELLOW)	20AWG
CONNECTOR	120V	HOT (BLACK)	16AWG
	120V	NEUTRAL (WHITE)	16AWG
	120V	GROUND (GREEN)	16AWG
	DMX	DMX+ (PURPLE)	22AWG
	DMX	DMX- (PINK)	22AWG
	DMX	GROUND (YELLOW)	22AWG

Daisy Chain

Multiple Fixtures



Multiple Power Sources

