



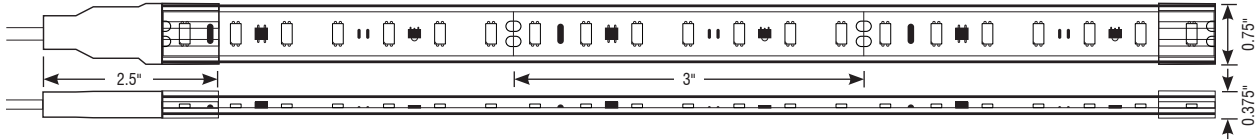
# OREX™ (INDOOR/OUTDOOR)

LINE VOLTAGE | LINEAR LED LIGHTING | 0-10V DIMMABLE\*

Fixture Type: \_\_\_\_\_

Project: \_\_\_\_\_

Location: \_\_\_\_\_



MODEL:	RX-24K	RX-27K	RX-30K	RX-35K	RX-40K	RX-50K	RX-65K
KELVIN	2400K	2700K	3000K	3500K	4000K	5000K	6500K
250 OUTPUT LUMENS	223 lm/ft	249 lm/ft	255 lm/ft	263 lm/ft	268 lm/ft	275 lm/ft	278 lm/ft
500 OUTPUT LUMENS	444 lm/ft	497 lm/ft	509 lm/ft	524 lm/ft	535 lm/ft	549 lm/ft	555 lm/ft

## PRODUCT FEATURES

- 120V Line Voltage
- Integral AC/DC Rectifier
- ELV Dimmable
- Hardwire or Plug-in Installation
- IP65

**\*0-10V DIMMABLE WITH OPTIONAL LCX-1041 MODULE**



## SPECIFICATIONS

Model	RX—OREX
Input Voltage	120 VAC
Watts per Foot	250 lm/ft = 3W/ft, 500 lm/ft = 6W/ft
Beam Spread	120°
Max Run Length	250 lm/ft = 100ft per Power Feed 500 lm/ft = 65ft per Power Feed
Length Increments	3" (76mm)
End Cap Dimensions	0.75" (19mm) × 0.375" (10mm) × 2.5" (63.5mm)
Orex Dimensions	0.563" (14.3mm) × 0.25" (6.5mm)
CRI	90+
Diode	3056
Dimming Options	*0–10V (Requires LCX-1041) ELV
Temp Range	-22°F (-30°C) to 122°F (50°C)

## ORDERING INFORMATION

Example: RX-24K-250-HW72-120V-42FT-6IN

Item	CCT	Output	Power Feed	Voltage	Feet	Inches
<b>RX</b>	<b>24K</b>	<b>250</b>	<b>HW72</b>	<b>120V</b>	<b>_ FT</b>	<b>_ IN</b>
RX—OREX	24K—2400K 27K—2700K 30K—3000K 35K—3500K 40K—4000K 50K—5000K 65K—6500K	250—250 lm/ft 500—500 lm/ft	HW72—72" Hardwire Feed HW240—240" Hardwire Feed PL72—72" Plug-in Feed PL144—144" Plug-in Feed <i>Consult Following Page For Power Feed Options</i>	120V 120V	<b>Length</b> — Enter number of feet, followed by any remaining inches. (i.e. 42FT-6IN) <i>Max run length is 100ft per Power Feed for 250 output and 65ft per Power Feed for 500 output.</i>	

Conforms to ANSI/UL Standard 1598  
Certified to CAN/CSA Standard C22.2 No. 250.0





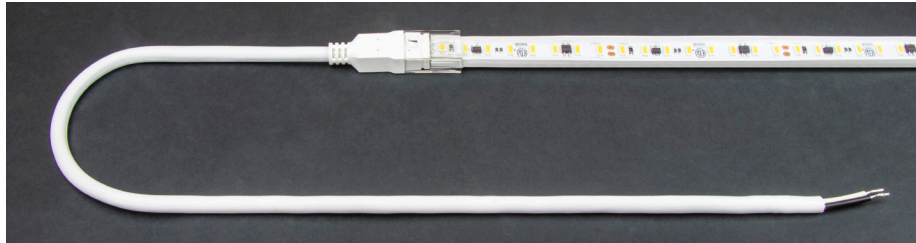
# OREX™ FACTORY POWER AND CONNECT OPTIONS

LINE VOLTAGE | LINEAR LED LIGHTING | 2400-6500K

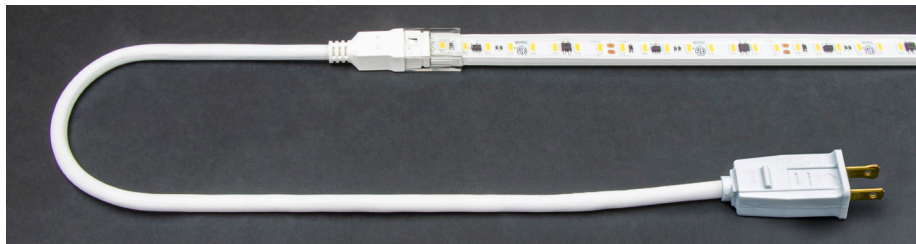
Fixture Type: \_\_\_\_\_

Project: \_\_\_\_\_

Location: \_\_\_\_\_



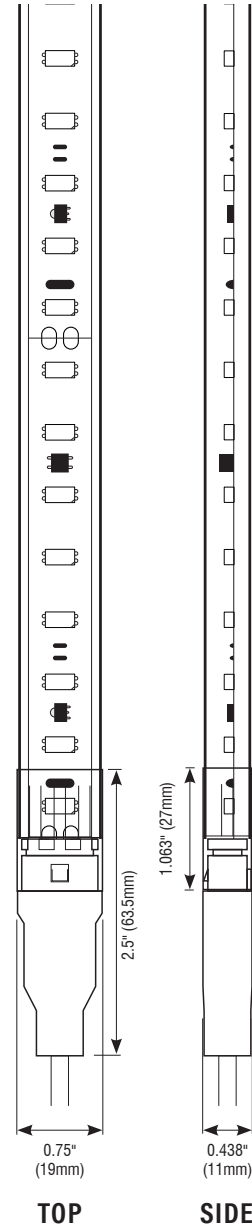
**FACTORY INSTALLED HARDWIRE POWER FEED**  
*Specify 72" or 240" length in component builder on preceding page.*



**FACTORY INSTALLED PLUG-IN POWER FEED**  
*Specify 72" or 144" length in component builder on preceding page.*



**FACTORY INSTALLED JUMP CABLES (CONSULT FACTORY FOR CONFIGURATION)**  
*Available in 6", 24", and 48" cable lengths.*





# OREX™ MOUNTING OPTIONS

LINE VOLTAGE | LINEAR LED LIGHTING | 2400-6500K

Fixture Type: \_\_\_\_\_

Project: \_\_\_\_\_

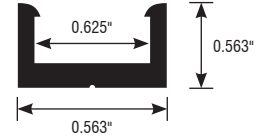
Location: \_\_\_\_\_

## MOUNTING CLIPS (10 PER PACK)



### SPECIFICATIONS

Model	RX-CLP-F1-PAK-P
Material	Polycarbonate
Length	0.563" (15mm)
Width	0.75" (19.7mm)
Height	0.438" (11.2mm)
Internal Width	0.625" (15.3mm)

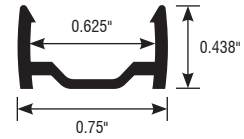


## PLASTIC MOUNTING BASE



### SPECIFICATIONS

Model	RX-CH-PL-2M
Material	Polycarbonate
Length	78.74" (2m)
Width	0.75" (18.9mm)
Height	0.438" (11.2mm)
Internal Width	0.625" (15.3mm)

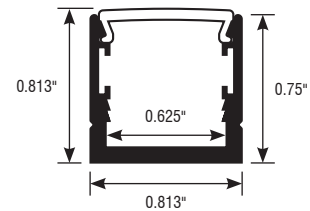


## ALUMINUM CHANNEL W/ FLAT PIXEL FREE LENS

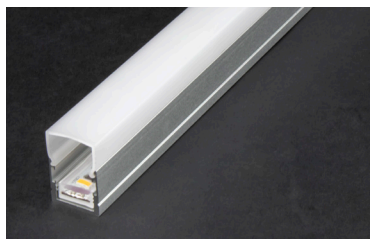


### SPECIFICATIONS

Channel/Lens Model	RX-CH-TL-2-FL
Channel Material	Aluminum
Lens Material	Acrylic
Length	78.74" (2m)
Width	0.813" (20mm)
Overall Height	0.813" (20.6mm)



## ALUMINUM CHANNEL W/ SQUARE PIXEL FREE LENS



### SPECIFICATIONS

Channel/Lens Model	RX-CH-TL-2-SQ
Channel Material	Aluminum
Lens Material	Acrylic
Length	78.74" (2m)
Width	0.813" (20mm)
Overall Height	1.188" (30.7mm)

