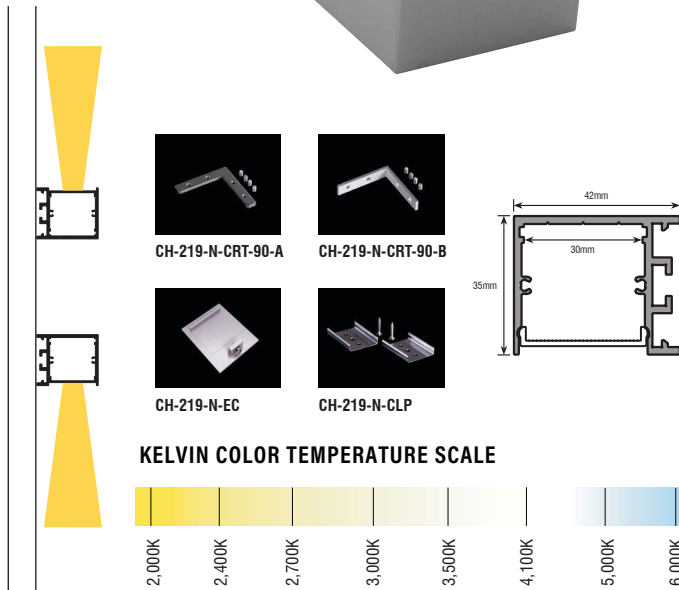
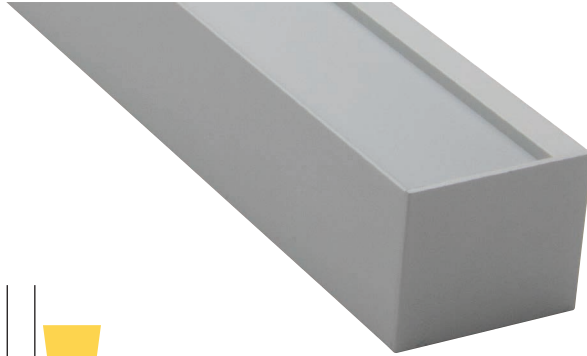




# PATRICK 219

LINEAR EASY-SPEC™



Fixture Type: \_\_\_\_\_

Project: \_\_\_\_\_

Location: \_\_\_\_\_

## FEATURES

- Optional Seamless Lensing Up to 100ft
- 100 to 1000 Lumens per Foot
- Field Replaceable Light Source
- 50,000 Hour Lamp Life
- Dimmable to 1%
- Anodized Finish
- Adjustable-Length Power Feed Included

## SPECIFICATIONS

Input Voltage	24V DC / Constant Voltage
CRI	90+
Dimming Options	PWM, Triac, 0-10V
Temp Range	-40°F to 149°F
Channel Height	35mm (1-3/8")
Channel Width	42mm (1-5/8")

## PART NUMBER BUILDER

Example:

**219-I-36-DV-35K-WH-CP-SV-ULV**

Model	Setting	Length (Unlimited) <sup>1</sup>	Output	CCT	Lens	Mounting Method	Finish	Power Supply
219	I						SV	ULV
219	I - Indoor	Inches	DL - 200+lm/ft DK - 400+lm/ft DV - 700+lm/ft VT - 1000+lm/ft  RGBW-1 RGBW-2 RGBW-3	24K - 2400 Kelvin 27K - 2700 Kelvin 30K - 3000 Kelvin 35K - 3500 Kelvin 40K - 4000 Kelvin 50K - 5000 Kelvin	FR - Frost WH - White SWH - Seamless White <i>(SWH for direct view applications only)</i>	CP - Mounting Clips	SV - Silver <i>(Custom Finishes Available)</i>	ULV - Universal Power Supply <sup>2</sup>

<sup>1</sup>Light Source is installed in field allowing for seamless lensing and unlimited run lengths

<sup>2</sup>120V = Forward Phase Dimming | 120/277 = 0-10V Dimming

For use with us Light Source

Certified to CAN/CSA Standard C22.2 No. 250.0

