



SIGNWAVE™ 7 (INDOOR/OUTDOOR)

SW7-SERIES | PIXEL CONTROL
FLEXIBLE LIGHTING SYSTEM

Fixture Type: _____

Project: _____

Location: _____

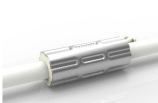


PRODUCT FEATURES

- Digital pixel control RGBW
- Dimmable
- 50,000 hour life
- Domed profile for large beam angle
- UL-listed for indoor and outdoor use
- IP67 or IP68 option
- Factory-installed power feed
- Injection-molded flush end caps
- For use with 24V power supplies

SPECIFICATIONS

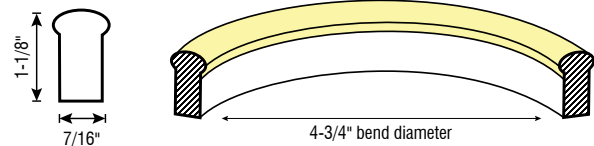
Series	SW7 - Signwave™ 7
Input Voltage	24V DC
Lumens	162 Lm/ft (White) + Red / Green / Blue
Wattage	3.7W/ft
Max Run Length	Unlimited, power feed every 96W
Beam Angle	320°
Dimensions	7/16"(11.5mm) × 1-1/8"(29mm)
Cut Intervals	4-15/16" (125mm)
Pixel Length	4-15/16" (125mm)
Control Options	SPI
Temp Range	-4°F (-20°C) to 113°F (45°C)



DryWire ferrule located 115mm from the cable connector. Protects against damage from water ingress inside cable wire.

Included in every run.

DOMES PROFILE DIMENSIONS



Conforms to ANSI/UL Standard 2108
Certified to CAN/CSA Standard C22.2 No. 250.0

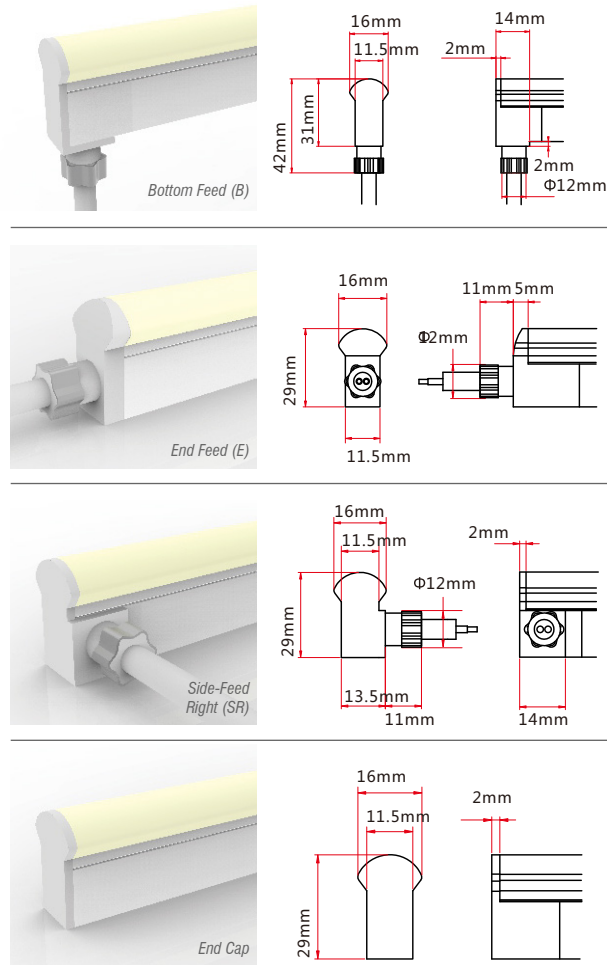




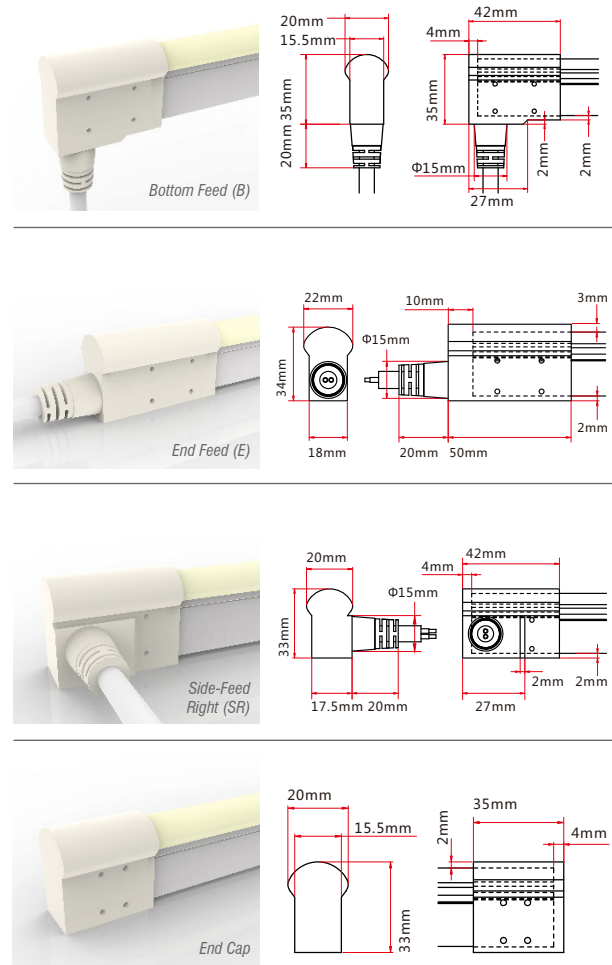
SIGNWAVE™ 7 (INDOOR/OUTDOOR)

SW7-SERIES | PIXEL CONTROL | FLEXIBLE LIGHTING SYSTEM

IP67 OPTIONS



IP68 OPTIONS



ORDERING INFORMATION

Example: SW7-72-TX-SL-72-IP68

Series	Length (Unlimited)	Color	Feed Point	Feed Length	Rating
SW7		TX			

SW7

Inches

TX - Pixel Control

B - Bottom Feed
SL - Side-Feed Left
SR - Side-Feed Right
E - End Feed

S - Standard (72 inch)
Inches - Custom length
(inches).

IP67
IP68



SIGNWAVE™ E-ACCESSORIES

FOR SIGNWAVE™ 1, 2, 5, 7 SERIES LIGHTING SYSTEM

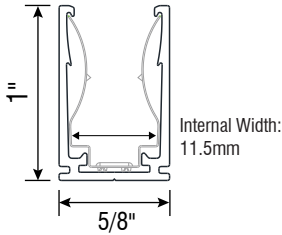
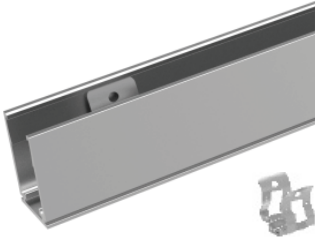
Fixture Type: _____

Project: _____

Location: _____

SW-E-CH-AL-2M

(2-meter aluminum mounting channel)

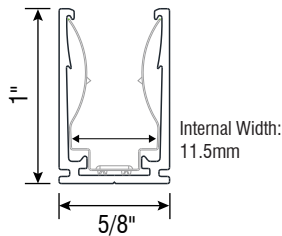


SPECIFICATIONS

Model	SW-E-CH-AL-2M
Material	Aluminum
Length	2m (78-3/4")
Width	16.2mm (5/8")
Height	25.6mm (1")
Internal Width	11.5mm (7/16")

SW-E-CLP-AL

(1.5-inch aluminum mounting clip)

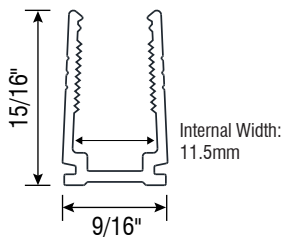
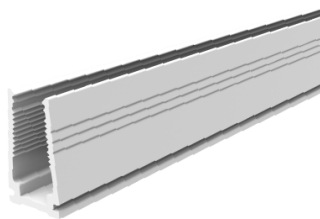


SPECIFICATIONS

Model	SW-E-CLP-AL
Material	Aluminum
Length	38.1mm (1-1/2")
Width	16.2mm (5/8")
Height	25.6mm (1")
Internal Width	11.5mm (7/16")

SW-E-CH-PL-2M

(2-meter plastic mounting clip)



SPECIFICATIONS

Model	SW-E-CH-PL-2M
Material	Plastic
Length	2m (78-3/4")
Width	14mm (9/16")
Height	24mm (15/16")
Internal Width	11.5mm (7/16")