



SIGNWAVE™ K-ACCESSORIES

FOR SIGNWAVE™ 3 SERIES LIGHTING SYSTEM

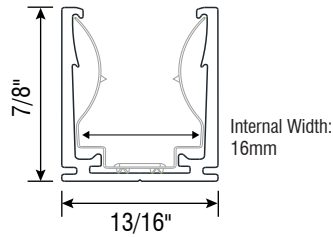
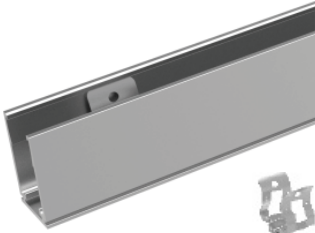
Fixture Type: _____

Project: _____

Location: _____

SW-K-CH-AL-2M

(2-meter aluminum mounting channel)

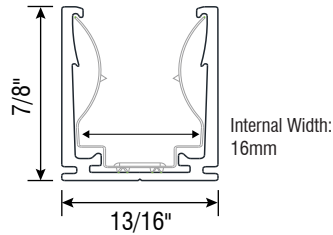


SPECIFICATIONS

Model	SW-K-CH-AL-2M
Material	Aluminum
Length	2m (78-3/4")
Width	20.7mm (13/16")
Height	22.3mm (7/8")
Internal Width	16mm (5/8")

SW-K-CLP-AL

(1.5-inch aluminum mounting clip)

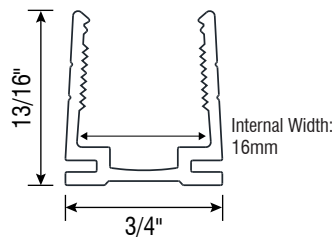
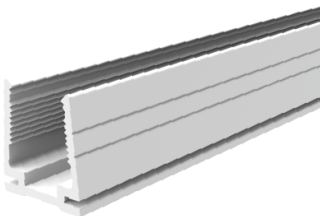


SPECIFICATIONS

Model	SW-K-CLP-AL
Material	Aluminum
Length	38.1mm (1-1/2")
Width	20.7mm (13/16")
Height	22.3mm (7/8")
Internal Width	16mm (5/8")

SW-K-CH-PL-2M

(2-meter plastic mounting clip)



SPECIFICATIONS

Model	SW-K-CH-PL-2M
Material	Plastic
Length	2m (78-3/4")
Width	19mm (3/4")
Height	21mm (13/16")
Internal Width	16mm (5/8")