



STIX™ (INDOOR)

ST-SERIES | SNAP-TOGETHER | LINEAR LED LIGHTING

Fixture Type: _____

Project: _____

Location: _____



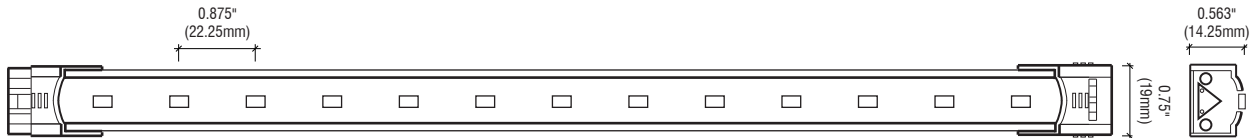
White Lens



Clear Lens



Side Profile



PRODUCT FEATURES

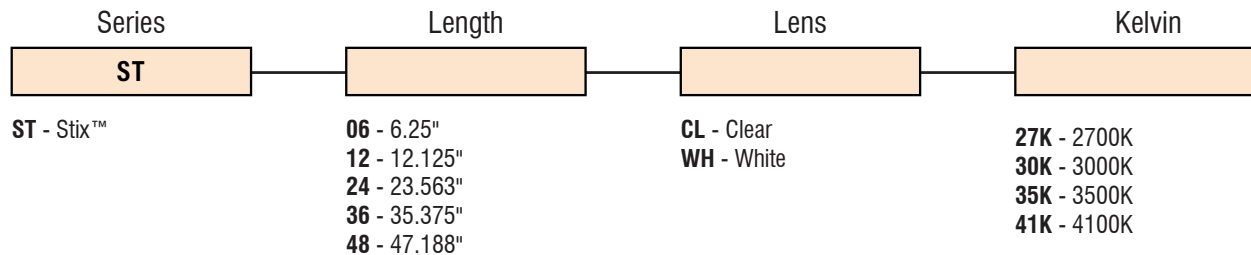
- IP60
- Linkable
- Dimmable
- 50,000 hour life
- Five lengths available
- UL-listed for indoor use
- For use with 24V power supply

SPECIFICATIONS

Series	ST - Stix™
Input Voltage	24V DC / Constant Voltage
Beam Spread	120°
Max Run Length	Unlimited, power every 16ft
Lumens/ft	322(27K), 330(3K), 340(35K), 347(40K)
Watts/ft	3.9W/ft
CRI	85
Diode	5630
Dimming Options	PWM, Triac, 0-10V, DMX, Hi-lume
Temp Range	-13°F (-25°C) to 140°F (60°C)

ORDERING INFORMATION

Example: **ST-12-CL-30K**



Conforms to ANSI/UL Standard 2108
Certified to CAN/CSA Standard C22.2 No. 250.0





STIX™ (INDOOR)

ACCESSORIES

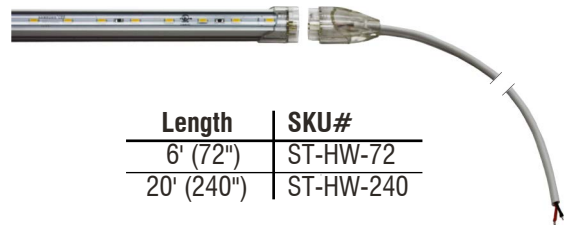
JUMP COUPLER (not included)



Length	SKU#	Length	SKU#
2"	ST-JC-2	12in	ST-JC-12
6"	ST-JC-6	24in	ST-JC-24
		48in	ST-JC-48

**Custom Lengths Available*

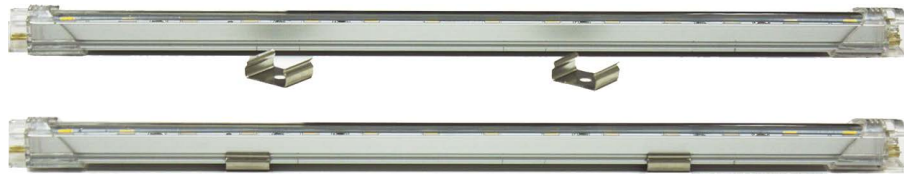
HARDWIRE POWER FEED (not included)



Length	SKU#
6' (72")	ST-HW-72
20' (240")	ST-HW-240

**Custom Lengths Available*

MOUNTING CLIPS (included)



SKU#
ST-MC

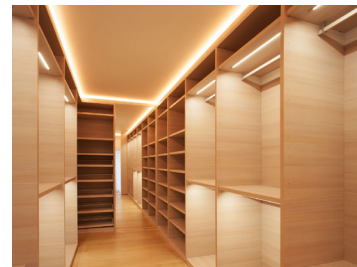
APPLICATION EXAMPLES



Retail Displays



Under Cabinet



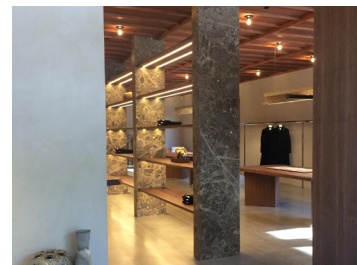
Cove



Toekick



Shelving



Accent Lighting