



CH-502-A

EXTRUDED ALUMINUM MOUNTING CHANNEL

Fixture Type: _____

Project: _____

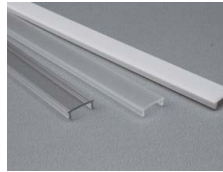
Location: _____

PRODUCT FEATURES

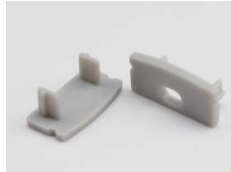
- Available in 2 meter sections
- Extruded aluminum construction
- Anodized matte finish
- Consult factory for custom lengths & finishes

SPECIFICATIONS

Model	CH-502-A
Length	78.74" (2m)
External Width	0.688" (17.1mm)
Internal Width	0.5" (12.2mm)
Height	0.313" (8mm)



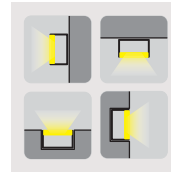
Clear lens (CL)
Frosted lens (FR)
White lens (WH)



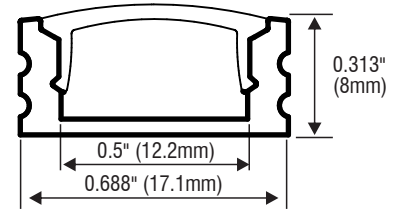
End cap with hole
End cap without hole



Mounting clips (CP)
Pivot mounting clips (PV)



Applications



ORDERING INFORMATION

Example: **CH502A-2-CL-CP-EC**

