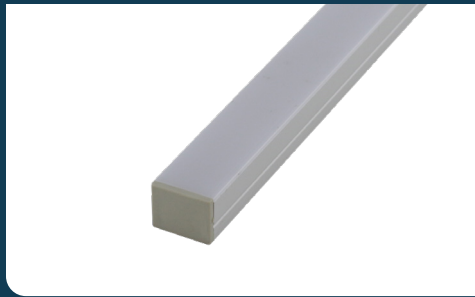


FIXTURE TYPE _____

PROJECT NAME _____

LOCATION _____



CH-409

EXTRUDED ALUMINUM MOUNTING CHANNEL



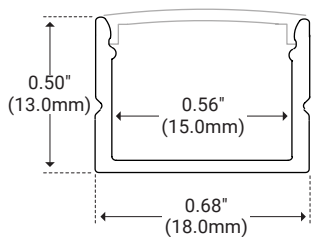
I Features

- Available in 2 Meter Sections
- Extruded Aluminum Construction
- Anodized Matte Finish
- Consult Factory for Custom Lengths & Finishes

I Specifications

Series	CH-409
Length	78.74" (2M)
Width	0.68" (18.0mm)
Height	0.50" (13.0mm)
Internal Width	0.56" (15.0mm)

I Dimensions



I Options

Description	Unit Number	Light Transmission
White Lens	WH	53%
White Continuous Lens	SWH	53%
Black Lens	BK	--
Frosted Lens	FR	85%
Clear Lens	CL	96%
Mounting Clips (5x)	CP	--
End Caps With Hole (2x)	EC	--

I Product Code Builder

Series	Length	Lens	Mounting	End Cap
CH-409	2		CP	EC
CH-409 – CH-409	2 – 2 Meters	WH – White SWH – White Continuous BK – Black FR – Frosted CL – Clear	CP – Mounting Clip (Included)	EC – End Caps (included)

Example: CH-409-2-WH-CP-EC