



# VINE™ SUSPENDED PENDANT

## INSTALLATION INSTRUCTIONS



**WARNING—SHOCK HAZARD!**  
BEFORE CONNECTING, TURN AC POWER OFF AT CIRCUIT BREAKER  
Failure to do so may result in serious injury or death.

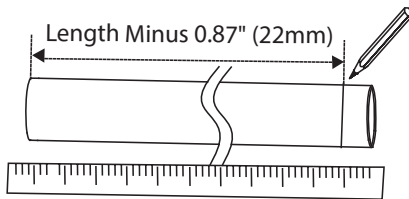
**SAFETY PRECAUTIONS:**  
Products should be installed and serviced by a qualified, licensed electrician in accordance with applicable local and national electrical safety codes.

Never install within 10ft or less from the nearest edge of a pool, spa, fountain, or similar location.

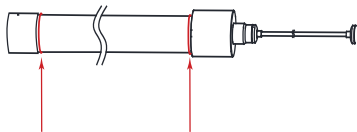
Never use currents or voltages that are not compatible.

Never modify or take apart KELVIX components beyond instructions or the warranty will be void.

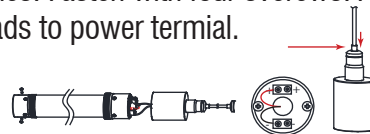
- ① If using polycarbonate sleeve measure desired length of light fixture from the bottom to the edge of the ceiling mount minus 0.87" (22mm) and cut.



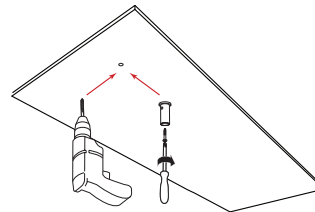
- ③ If using polycarbonate sleeve slide rubber O-ring over fixture and nest at the base of both inner sleeves. Slide the polycarbonate sleeve tube over light fixture. Attach terminal end outer sleeve.



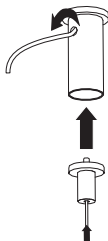
- ② Cut leads 1.18" (30mm) long and strip ends. Remove white insulation at large diameter cable strain relief. Slip inner sleeve over power feed and terminal ends. Use small philips screwdriver to 'punch' pilot holes. Fasten with four screws. Attach leads to power terminal.



- ④ Drill holes into ceiling for drywall anchor or screw. Fasten selected ceiling mount to ceiling with screw.



- ⑤ Fasten bottom part of ceiling mount. Feed the power wire through side or top hole.



- ⑥ Connect leads to power source.

