



Pavex™ Linear & Square

Installation Instructions

⚠ SAFETY PRECAUTIONS

Products should be installed and serviced by a qualified, licensed electrician in accordance with applicable local and national electrical safety codes.

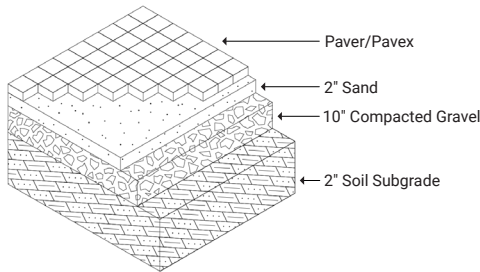
Never use currents or voltages that are not compatible.

Never modify or take apart Kelvix components beyond instructions or the warranty will be void.

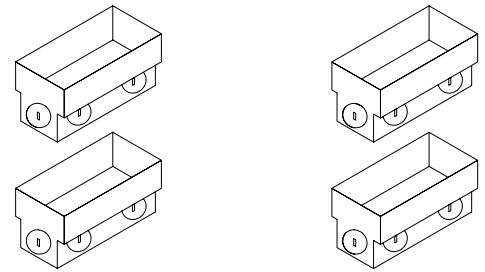
Improper installation and inadequate drainage may cause the fixtures to fail and are not covered under warranty in these circumstances.

BEFORE YOU START

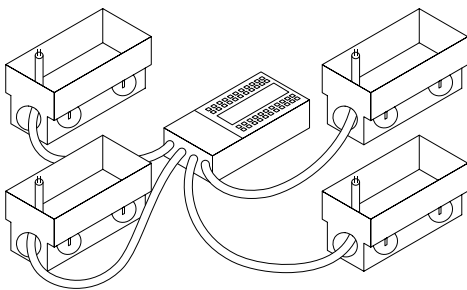
Ground Preparation is crucial to ensure proper drainage for Pavex. The illustration is an example of a typical cross section of a concrete paver installation. Please refer to your paver manufacturer's instructions for actual ground preparation based on ASTM guidelines before you start.



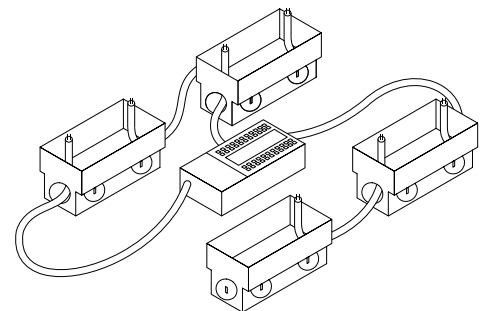
1 | Layout Pavex housings in desired locations.



2 | Run low voltage power from the power supply to the fixtures per local building codes. Pavex housings are supplied with 1 1/4\"/>



OR

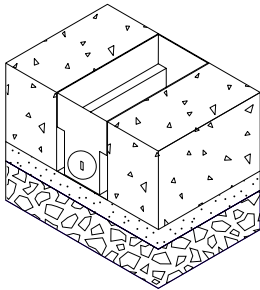




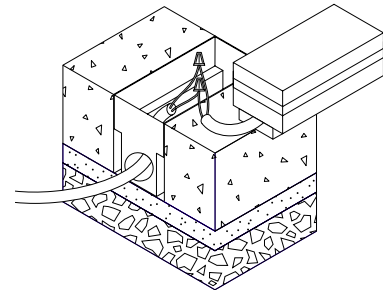
Pavex™ Linear & Square

Installation Instructions

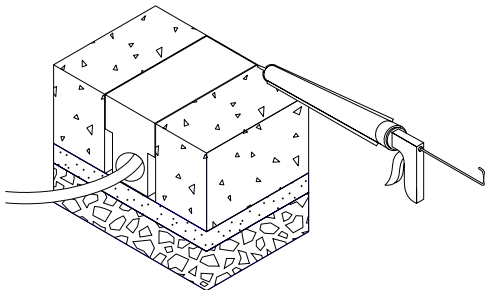
- 3** | Level subsurface so that the top of the Pavex housing aligns with the top of the pavers.



- 4** | Connect Pavex lights to power leads with waterproof connectors. Place Pavex fixture in the housing ensuring that all of the cables are nested neatly in the housing unit and glass is flush with the paving stones.



- 5** | Optional step. Apply a bead of silicone between the face edge of the light source and the stainless steel housing.



- 6** | Connect the power leads to the power supply. Please refer to power supply installation instructions for further details.

